



**ST. CLAIR CATHOLIC**  
**DISTRICT SCHOOL BOARD**  
*Lighting the Way ~ Rejoicing in Our Journey*

---

***ADDENDUM # 003***

---

**ST. CLAIR CATHOLIC DISTRICT SCHOOL BOARD  
MONSIGNOR UYEN CATHOLIC SCHOOL**

**255 LARK STREET, CHATHAM, ONTARIO**

**TENDER NO.: 618-CP1510**

RWAI Project No. 1506

Documents prepared by:

St. Clair Catholic District School Board

AND

Randy Wilson Architect Inc.  
Suite 1Q, 280 Queens Avenue  
London, Ontario N6B 1X3

Issue Date:  
Wednesday, May 6, 2015

*This addendum forms part of the Contract Documents and amends the original drawings and specifications issued for Bid on April 14, 2015.*

## **TABLE OF CONTENTS**

ADDENDUM # 3 (Including cover)	3 Page(s)
Sketch SK-01	1 Page(s)

TOTAL PAGE COUNT FOR THIS ADDENDUM	4 Page(s)
------------------------------------	-----------

## **PART A – GENERAL**

### 1.1 TENDER QUESTION(S)

a. Question:

As per our conversation and as per attached in the Instruction to Bidders Item 1.14.3 Asbestos Abatement works will be completed by an approved asbestos abatement contractor and paid for out of the designated cash allowance. There are no Cash Allowances. Please advise.

Answer:

A \$ 5,000.00 to be included as a cash allowance for asbestos abatement.

Clarification:

Data will be performed by the board's approved data contractor and General Contractor will be responsible for the installation of empty conduits, sleeves, ceiling and wall boxes for the data contractor to install their wiring and data outlets into.

Also, The general contractor will assume the PA contract and look after the supervision, coordination, safety and payment..

## **PART B – SPECIFICATIONS**

- **BID FORM**

### 2) **CASH ALLOWANCES**

1. Include Stipulated Sum of Five Thousand Dollars (\$5,000.00) to cover costs associated with Asbestos abatement work.
2. Include Stipulated Sum of Twenty Thousand Dollars (\$20,000.00) to cover costs associated with PA system
3. Include Stipulated Sum of Seven Thousand Dollars (\$7,000.00) to cover costs associated with Data cabling for SMARTboard and classroom data

The general contractor will be responsible for all coordination, procurement and safety of the 3 subtrades while performing work on the GCs site.

### **PART C – ARCHITECTURAL DRAWINGS**

RESERVED

### **PART D – STRUCTURAL DRAWINGS**

1. Shore existing W8x17 lintel to allow for removal of brick veneer and concrete block at lintel end support down to existing foundation wall. Provide new HSS 127x127x6.4 column + 175mm wide x 16mm thick x 280mm long baseplate anchored with 4-16mm diameter threaded rods drilled and epoxied minimum 150mm into existing block foundation wall. Column to extend to underside of existing W8x17 lintel. Provide welded connection from existing W8x17 lintel to new HSS column. Provide one L51x51x6.4mm diagonal brace (at approximately 45 degrees) from top of new HSS column to top chord of adjacent OWSJ. Provide masonry anchorage to steel column as per typical detail 4.05 on attached sketch SK-01 and rebuild concrete block and brick veneer.

2. Provide new 2-L89x89x6.4 back to back angle lintel for new window opening. Angles shall be welded at 400mm o/c top and bottom of lintel with first weld 75mm from ends of angles. Cut webs of concrete blocks around vertical legs of lintel. Connect new lintel to new HSS 127x127x6.4 column at one end, and bear minimum 200mm on concrete block wall at other end. Grout concrete block solid under lintel bearing.

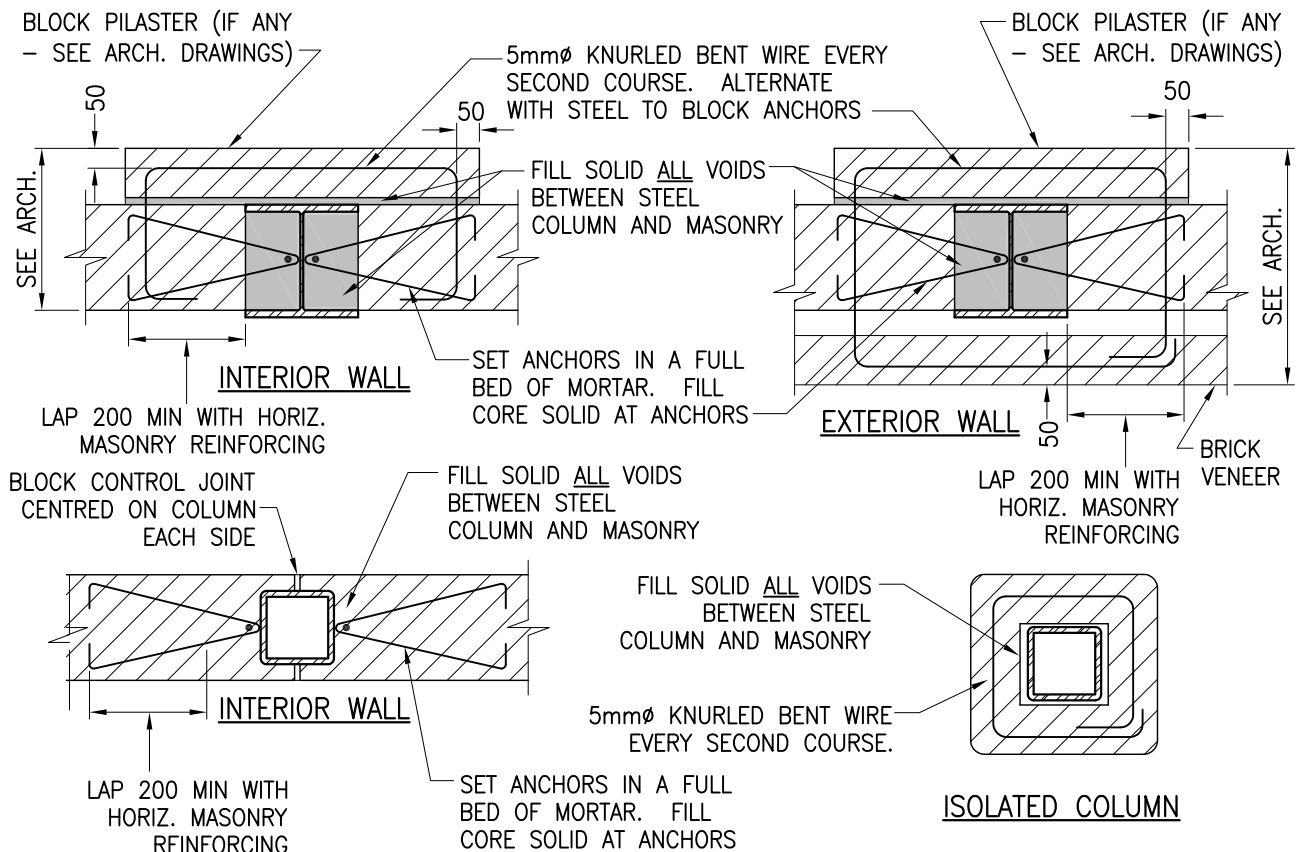
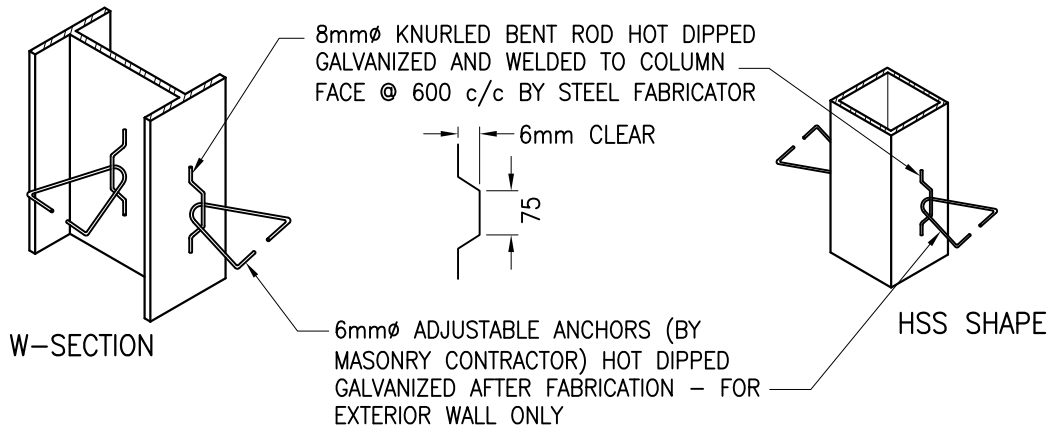
### **PART E – MECHANICAL / ELECTRICAL DRAWINGS**

RESERVED

#### **Architectural Sketches Included**

N/A

**END OF ADDENDUM # 003**



**NOTES:**

1. STEEL FABRICATOR TO COORDINATE LOCATION OF MASONRY ANCHORS WITH BLOCK COURSING ON ARCH. DWGS.
2. BLOCK PILASTERS MAY BE REQUIRED TO FIRE RATE THE STEEL COLUMN - REFER TO ARCH. DRAWINGS FOR COLUMN PLAN DETAILS
3. SEE PLANS FOR COLUMN SIZES. SEE ARCH. DRAWINGS FOR WALL LOCATION RELATIVE TO COLUMN.

**4.05**

**MASONRY ANCHORAGE TO STEEL COLUMNS**

MONSIGNOR UYEN  
RENOVATION



458 Queens Ave, London, ON, Canada N6B 1X9  
tel. (519) 433-4661 fax. (519) 433-6420

DRAWN BY:  
MBM

PROJECT #:  
15146

CHECKED BY:  
GVB

DRAWING #:

DATE:  
MAY 06 2015

**SK-01**

CHATHAM

ONTARIO